

SECTION

BRM

BODY REPAIR

CONTENTS

VEHICLE INFORMATION	2	SERVICE DATA AND SPECIFICATIONS (SDS)	4
BODY EXTERIOR PAINT COLOR	2	BODY ALIGNMENT	4
Body Exterior Paint Color	2	Body Center Marks	4
PRECAUTION	3	Description	5
PRECAUTIONS	3	Engine Compartment	5
Precaution for Supplemental Restraint System (SRS) "AIR BAG" and "SEAT BELT PRE-TENSIONER"	3	Underbody	7
		Passenger Compartment	10
		Rear End Panel	11

BRM

BODY EXTERIOR PAINT COLOR

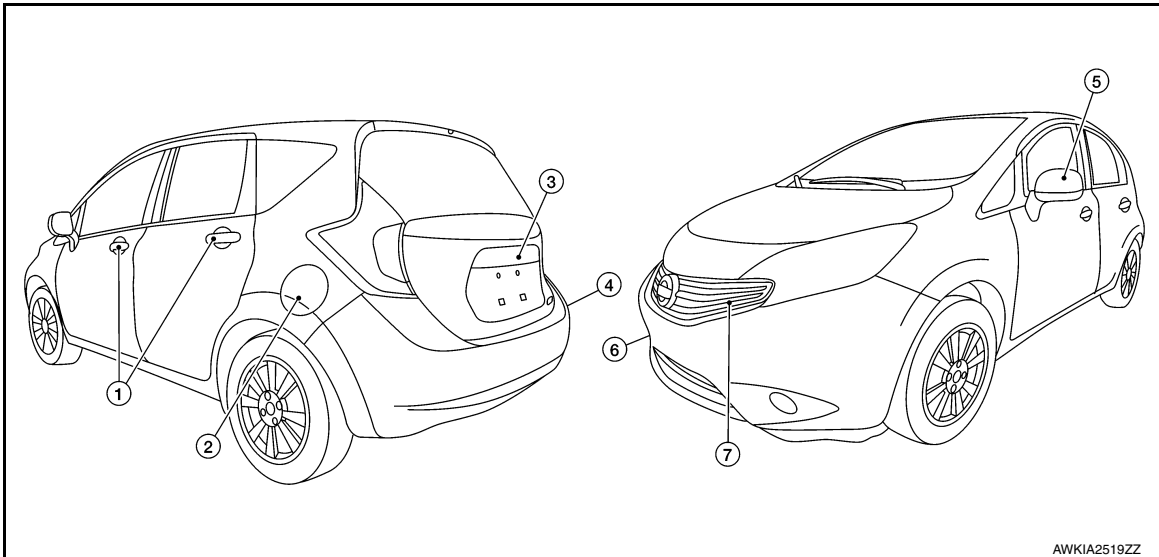
< VEHICLE INFORMATION >

VEHICLE INFORMATION

BODY EXTERIOR PAINT COLOR

Body Exterior Paint Color

INFOID:000000009654082



Component		Color code	B17	FAK	QAC	KH3	K23	K36	NAC	RBE
		Description	Blue	Green	White	Black	Silver	Gray	Red	Blue
		Paint type	M	M	3P	2S	M	M	M	M
		Hard clear coat	t	t	t	t	t	t	t	t
1	Door outside handles	Body color	B17	FAK	QAC	KH3	K23	K36	NAC	RBE
2	Fuel filler lid	Body color	B17	FAK	QAC	KH3	K23	K36	NAC	RBE
3	Back door outer finisher	Body color	B17	FAK	QAC	KH3	K23	K36	NAC	RBE
4	Rear bumper fascia	Body color	B17	FAK	QAC	KH3	K23	K36	NAC	RBE
5	Door mirror	Body color	B17	FAK	QAC	KH3	K23	K36	NAC	RBE
		Black	KH3	KH3	KH3	KH3	KH3	KH3	KH3	KH3
6	Front bumper fascia	Body color	B17	FAK	QAC	KH3	K23	K36	NAC	RBE
7	Front grille	Black	KH3	KH3	KH3	KH3	KH3	KH3	KH3	KH3

M = Metallic, 2S = Solid and Clear, 3P = 3-Stage pearl, t = Primerless Diamond Clear coat.

PRECAUTIONS

< PRECAUTION >

PRECAUTION

PRECAUTIONS

Precaution for Supplemental Restraint System (SRS) "AIR BAG" and "SEAT BELT PRE-TENSIONER"

INFOID:000000009654083

The Supplemental Restraint System such as "AIR BAG" and "SEAT BELT PRE-TENSIONER", used along with a front seat belt, helps to reduce the risk or severity of injury to the driver and front passenger for certain types of collision. Information necessary to service the system safely is included in the SR and SB section of this Service Manual.

WARNING:

- To avoid rendering the SRS inoperative, which could increase the risk of personal injury or death in the event of a collision which would result in air bag inflation, all maintenance must be performed by an authorized NISSAN/INFINITI dealer.
- Improper maintenance, including incorrect removal and installation of the SRS, can lead to personal injury caused by unintentional activation of the system. For removal of Spiral Cable and Air Bag Module, see the SR section.
- Do not use electrical test equipment on any circuit related to the SRS unless instructed to in this Service Manual. SRS wiring harnesses can be identified by yellow and/or orange harnesses or harness connectors.

PRECAUTIONS WHEN USING POWER TOOLS (AIR OR ELECTRIC) AND HAMMERS

WARNING:

- When working near the Airbag Diagnosis Sensor Unit or other Airbag System sensors with the Ignition ON or engine running, DO NOT use air or electric power tools or strike near the sensor(s) with a hammer. Heavy vibration could activate the sensor(s) and deploy the air bag(s), possibly causing serious injury.
- When using air or electric power tools or hammers, always switch the Ignition OFF, disconnect the battery and wait at least three minutes before performing any service.

A
B
C
D
E
F
G
H
I
J
L
M
N
O
P

BRM

BODY ALIGNMENT

< SERVICE DATA AND SPECIFICATIONS (SDS)

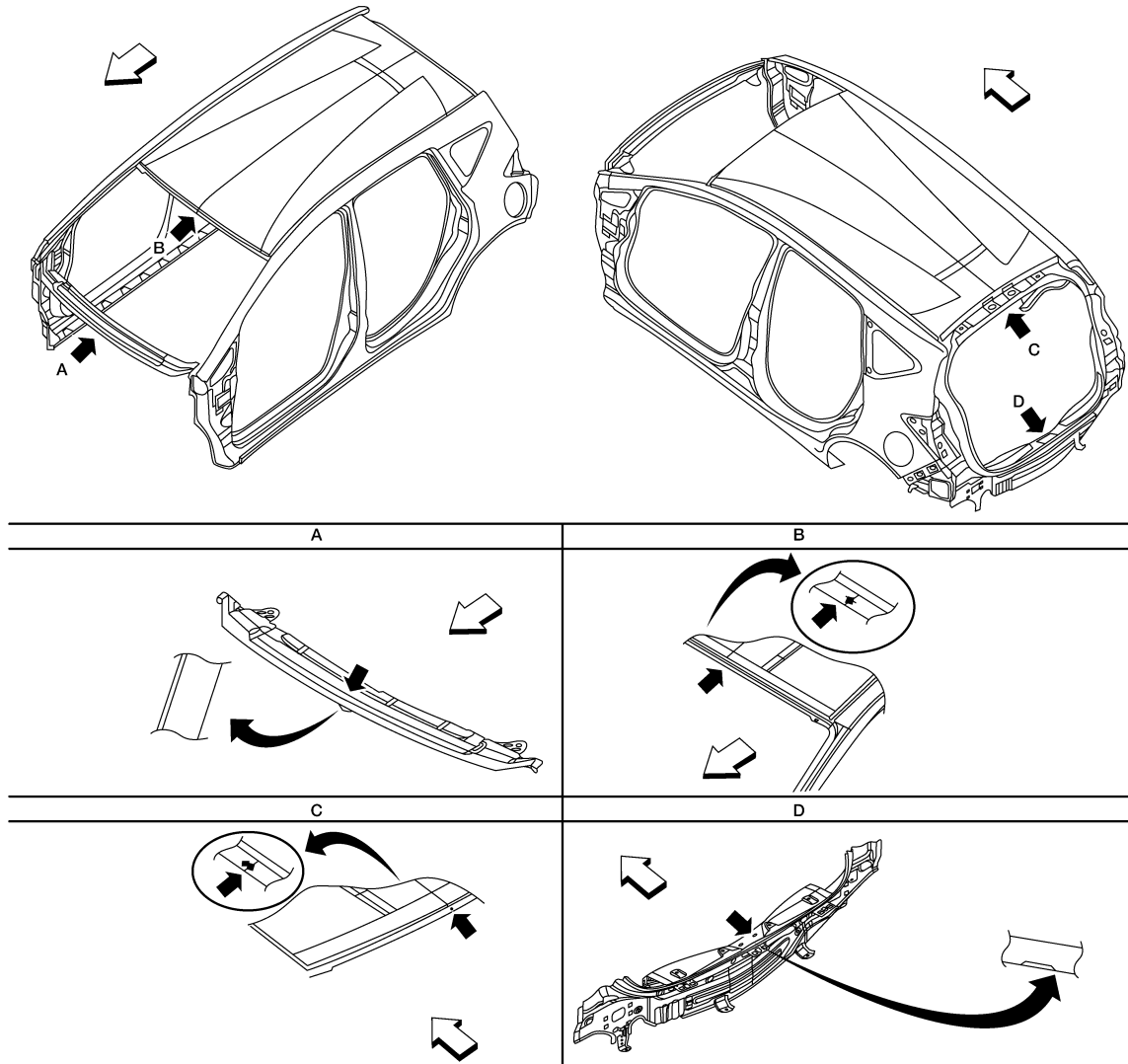
SERVICE DATA AND SPECIFICATIONS (SDS)

BODY ALIGNMENT

Body Center Marks

INFOID:000000009654084

A mark has been placed on each part of the body to indicate the vehicle center. When repairing parts damaged by an accident which might affect the vehicle frame (members, pillars, etc.), more accurate and effective repair will be possible by using these marks together with body alignment specifications.



AWKIA2546ZZ

↩ Front

Point	Portion	Mark
A	Cowl top extension	Hole
B	Front roof position mark for alignment	Raised dimple
C	Rear roof position mark for alignment	Raised dimple
D	Rear panel upper	Cut out

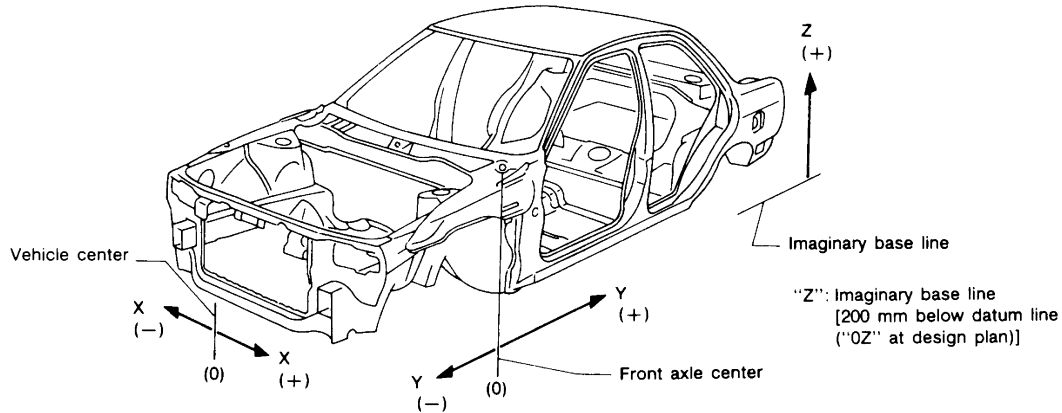
BODY ALIGNMENT

< SERVICE DATA AND SPECIFICATIONS (SDS)

Description

INFOID:000000009654085

- All dimensions indicated in the figures are actual.
- When using a tracking gauge, adjust both pointers to equal length. Then check the pointers and gauge itself to make sure there is no free play.
- When a measuring tape is used, check to be sure there is no elongation, twisting or bending.
- Measurements should be taken at the center of the mounting holes.
- An asterisk (*) following the value at the measuring point indicates that the measuring point on the other side is symmetrically the same value.
- The coordinates of the measurement points are the distances measured from the standard line of "X", "Y" and "Z".



PIIA0104E

Engine Compartment

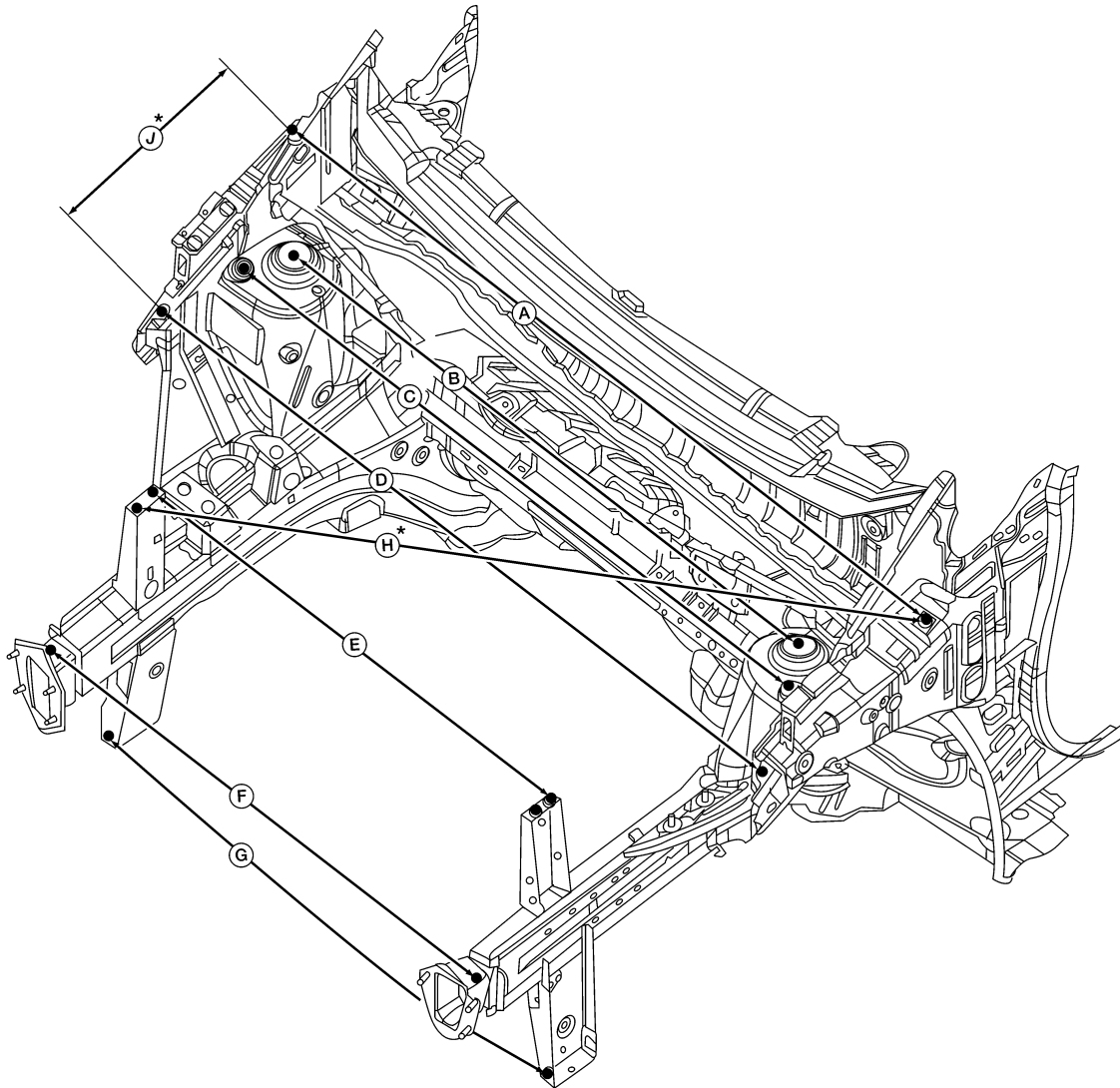
INFOID:000000009654086

MEASUREMENTS

BRM

BODY ALIGNMENT

< SERVICE DATA AND SPECIFICATIONS (SDS)



ALKIA3123ZZ

Unit: mm (in)

Position	Description	Measurement
A.	Center of rear hood hinge hole to center of rear hood hinge hole 12 (0.47)	1407.0 (55.39)
B.	Center shock hole to the center of the shock hole 52 (2.05)	1132.0 (44.57)
C.	Center of front shock tower hole to the center of the front shock tower hole 12 (0.47)	1228.0 (48.35)
D.	Hole for hood locator to the hole for hood locator 12 (0.47)	1346.0 (53.99)
E.	Rear hole for radiator support to rear hole for radiator support 7 (0.28)	893.0 (35.16)

BODY ALIGNMENT

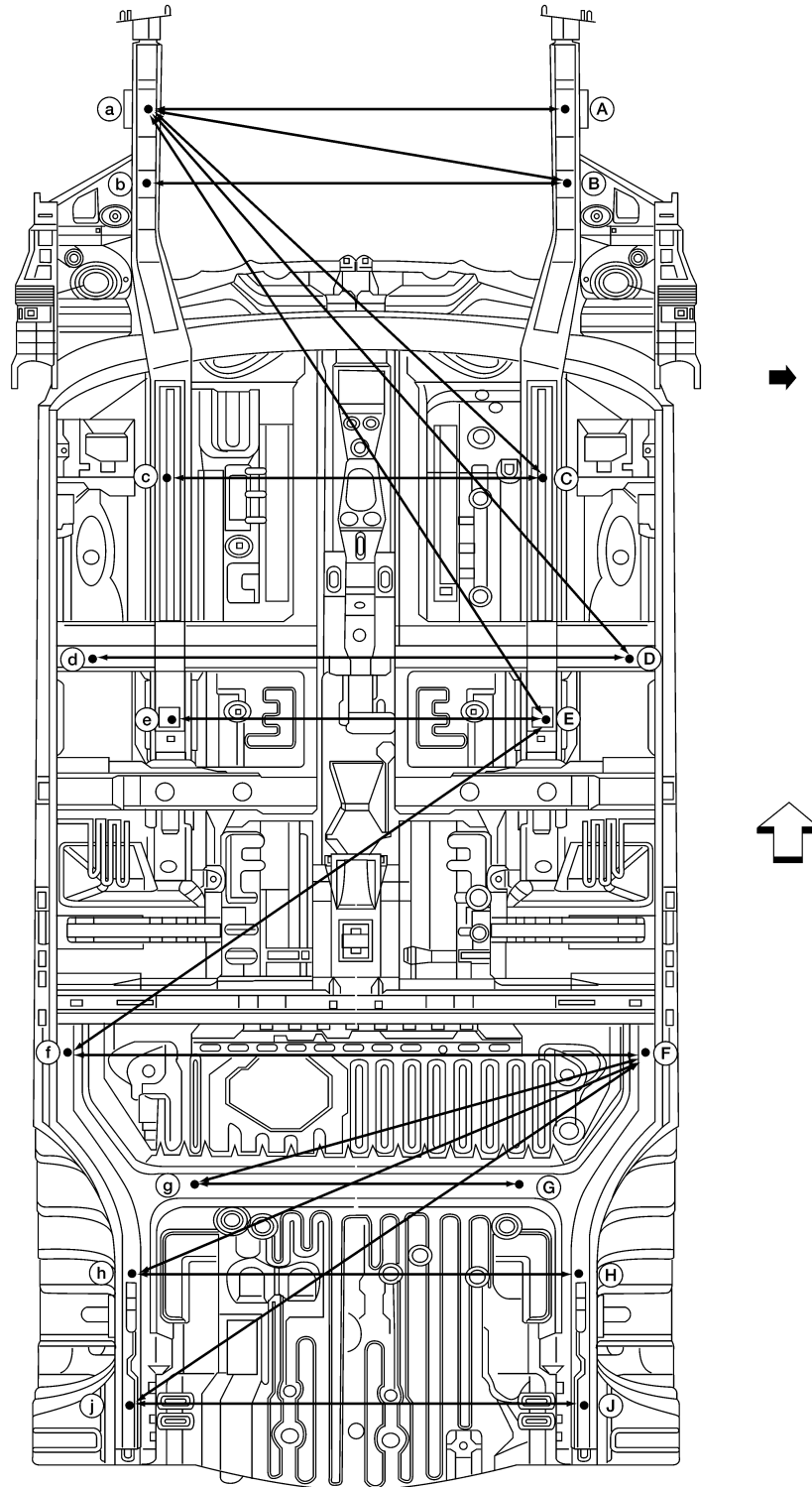
< SERVICE DATA AND SPECIFICATIONS (SDS)

F.	Upper hole for front bumper reinforcement to upper hole front bumper reinforcement 8.2 (0.32)	948.0 (37.32)
G.	Lower hole front radiator support to lower hole front lower radiator support 11 (0.43)	987.0 (38.86)
H.	Rear hinge hole 12 (0.47) to front hole upper radiator support 12 (0.47)	1312.0 (51.65)
J.	Rear hinge hole 12 (0.47) to hood locator hole 7 (0.28)	345.0 (13.58)

Underbody

INFOID:000000009654087

MEASUREMENT



A
B
C
D
E
F
G
H
I
J
BRM
L
M
N
O
P

ALKIA3128ZZ

BODY ALIGNMENT

< SERVICE DATA AND SPECIFICATIONS (SDS)

Unit:mm (in)

↩ Front

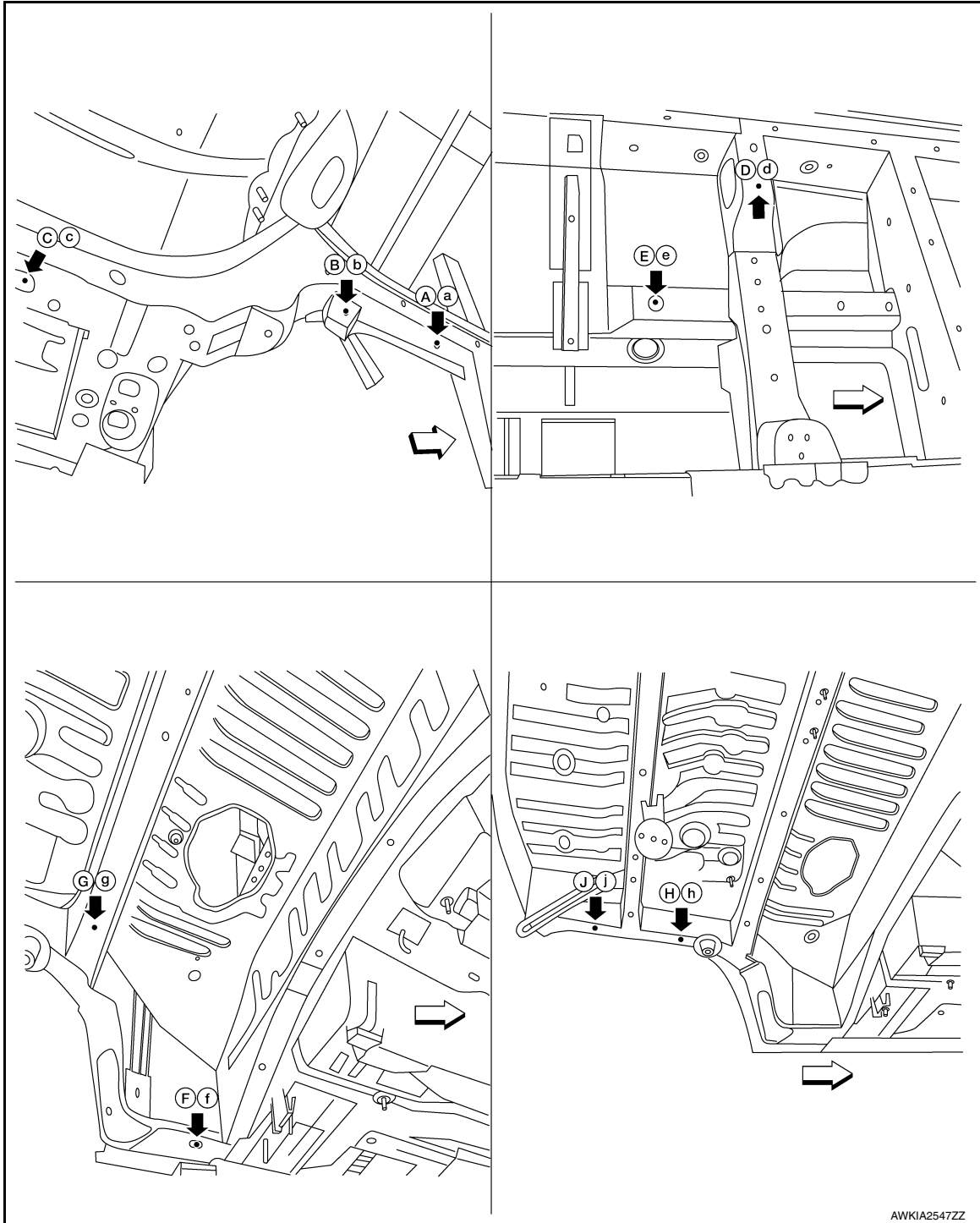
← LH side

Points	Measurement	Points	Measurement
A-a	904.0 (35.59)	B-b	820.0 (32.28)
C-c	797.0 (31.38).	D-d	1134.0 (44.65)
E-e	797.0 (31.38)	F-f	1220.0 (48.03)
G-g	746.0 (29.37)	H-h	951.0 (37.44)
J-j	952.0 (37.48)	A-b*	1835.5 (72.26)
A-c*	1192.2 (46.94)	A-d*	1619.6 (63.76)
A-e*	1665.0 (65.55)	E-f*	1362.1 (53.63)
F-g*	1038.5 (40.89)	F-h*	1214.5 (47.81)
F-j*	1379.2 (54.30)		

BODY ALIGNMENT

< SERVICE DATA AND SPECIFICATIONS (SDS)

MEASUREMENT POINTS



← Front

Unit: mm (in)

Points	Coordinates			Remarks
	X	Y	Z	
A, a	± 299.0 (±11.77)	±452.0 (17.80)	293.6 (11.56)	Hole 16.0 (0.63)
B, b	1305.0 (51.38)	± 410.0 (16.14)	63.0 (2.48)	Hole 14.0X12.0 (0.55X0.47)
C, c	507.0 (19.96)	± 398.5 (15.69)	73.5 (2.89)	Hole 14.0X12.0 (0.55X0.47)
D, d	950.0 (37.40)	± 567.0 (22.32)	136.0 (5.35)	Hole 12.0 (0.47)
E, e	1107.0 (43.58)	± 398.5 (15.69)	25.0 (0.98)	Hole 12.0 (0.47)

BODY ALIGNMENT

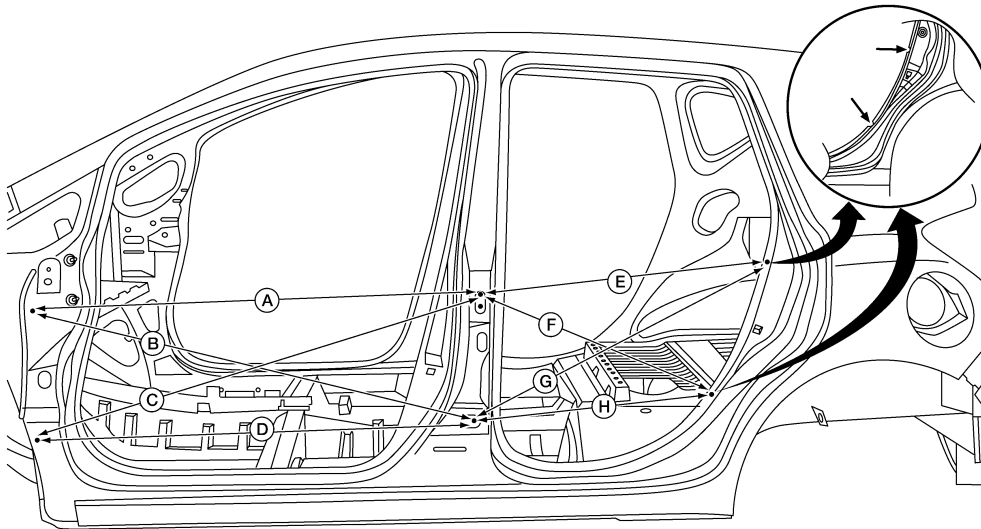
< SERVICE DATA AND SPECIFICATIONS (SDS)

Points	Coordinates			Remarks
	X	Y	Z	
F, f	2022.5 (79.63)	± 610.0 (24.02)	32.8 (1.29)	Hole 16.0 (0.63)
G, g	2305.0 (90.75)	± 373.0 (14.69)	213.0 (8.39)	Hole 16.0 (0.63)
H, h	2535.0 (99.80)	± 475.5 (18.72)	217.5 (8.56)	Hole 18.0x16.0 (0.71x0.63)
J, j	2850.0 (112.20)	± 476.0 (18.74)	227.5 (8.96)	Hole 18.0x16.0 (0.71x0.63)

Passenger Compartment

INFOID:000000009654088

MEASUREMENTS



ALKIA3130ZZ

Unit: mm (in)

Position	Description	Measurement
A.	Front door upper hinge forward bolt hole to rear door upper hinge upper bolt hole.	1166.4 (45.92)
B.	Front door upper hinge forward bolt hole to rear door lower hinge rear bolt hole.	1189.9 (46.85)
C.	Front door lower hinge forward bolt hole to rear door upper hinge upper bolt hole.	1219.7 (48.02)
D.	Front door lower hinge forward bolt hole to rear door lower hinge rear bolt hole.	1142.0 (44.96)
E.	Rear door upper hinge upper bolt hole to rear door body side upper notch.	755.7 (29.75)
F.	Rear door upper hinge upper bolt to rear door body side lower notch.	681.5 (26.83)
G.	Rear door lower hinge rear hole to rear door upper body side notch.	844.3 (33.24)
H.	Rear door rear hinge hole to rear door lower body side notch.	620.5 (24.43)

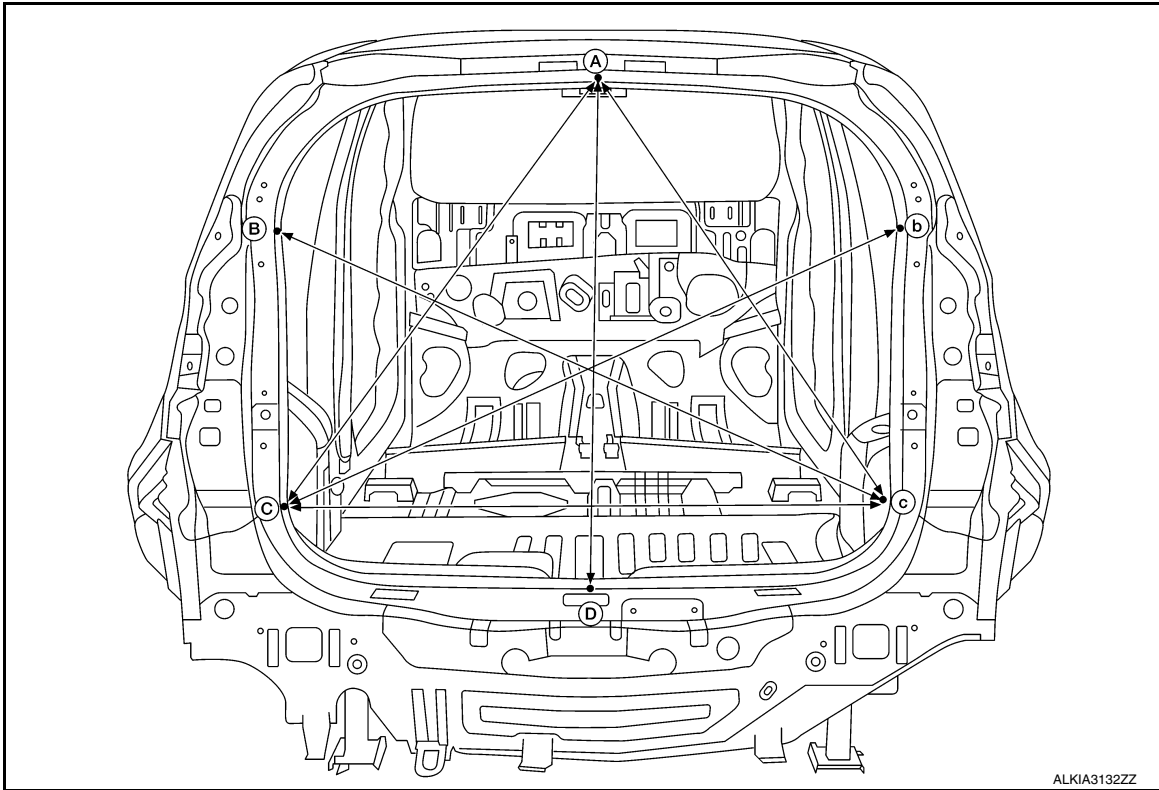
The vehicle is symmetrically identical dimensions on both LH and RH sides of the vehicle.

BODY ALIGNMENT

< SERVICE DATA AND SPECIFICATIONS (SDS)

Rear End Panel

INFOID:000000009654089



ALKIA3132ZZ

Unit: mm (in)

Point	Measurement	Point	Measurement
A - D	853.7 (33.61)	A - C*	871.0 (34.29)
C* - b*	1121.7 (44.16)	C - c	1055.0 (41.5)

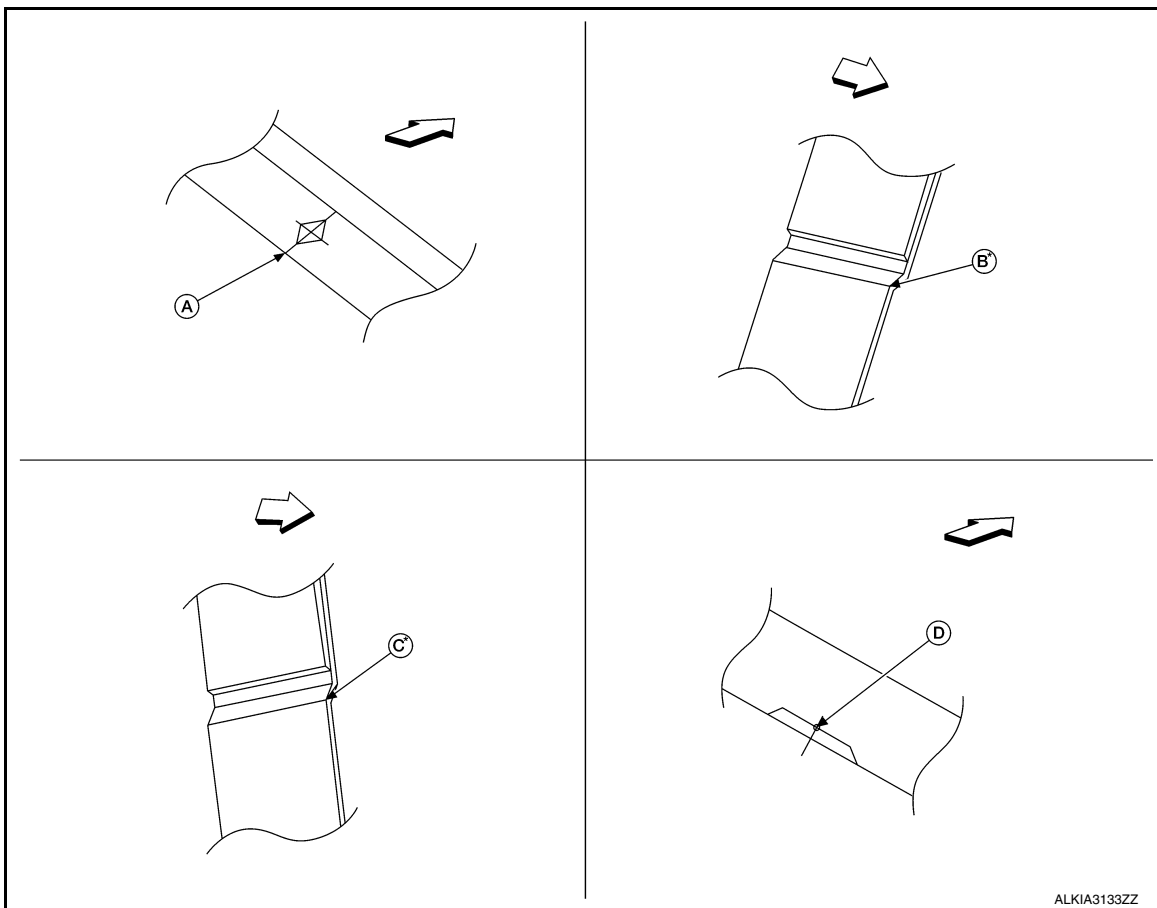
* The vehicle is symmetrically identical dimensions on both RH and LH sides of the vehicle.

MEASUREMENT POINTS

BRM

BODY ALIGNMENT

< SERVICE DATA AND SPECIFICATIONS (SDS)



↩ Front

Point	Description	Point	Description
A.	Roof flange end of center positioning mark	B.	Back pillar main joggle
C.	Upper rear panel joggle	D.	Edge of rear panel between back door striker installing holes